



Wild Bird News®

WINTER 2011
VOL. XXIV, No. 4
WILD BIRD CENTERS OF AMERICA, INC.®

Be surprised by your backyard™

WINTER WONDERLAND

Thoughts of the holiday season begin to tease our minds with each passing turn of the calendar, and we realize winter is not too far away. For some, visions of snow, ice and colder temperatures come to mind, while others across the country experience just a graying in the landscape around them.

As the weeks pass and days continue to shorten, the familiar birds in our backyard seem to shake the wrinkles out of their stored winter wardrobes while they pack away their summer regalia for another year. Almost overnight, male goldfinches become a dull gray-brown, hard to distinguish against the female of the species, while the bright red bibs and caps of male house finches become downright subdued.

For some, behavior also shows a seasonal change. Most birds pair off for spring and summer nesting, but as winter approaches, some establish a fascinating variety of social organizations. Nuthatches travel in pairs, titmice maintain small family groupings, juncos establish small flocks, and other species join together to form mixed variety flocks. By staying and working together in numbers, these groups can minimize predation and locate food more efficiently.

Downy woodpeckers, for instance, often travel with chickadees and titmice. While the downy may rely on the small birds as sentinels to warn of approaching danger, the chickadees and titmice may later be seen pecking at rich feeding sites that the downy has discovered. A win-win situation for the entire mixed flock as well as for the birder who maintains well stocked feeders in their backyard.

Offering seed in feeders during the colder months establishes eating areas the birds of winter will frequent. If snow falls in your area, be sure to brush it from feeders to help keep the seed dry as well as clear access to the portals. In wet weather, rain guards will help keep seed dry and birds sheltered, and feeders with screened bottoms drain easily so seed can quickly dry out.

Suet slipped into a single suet cage or offered in a double cage suet stick is popular with woodpeckers and flickers, as well as chickadees, titmice and nuthatches, and is an easy and inexpensive addition to your winter-feeding station. High in calories, suet helps provide the energy birds need to make it through the winter. It's especially appealing to insect-eating birds as there are fewer insects around during the colder winter months.



Chickadees and other wintering backyard birds intensify their use of reliably stocked feeders during these months when food is harder to find. So as temperatures drop, and the days take on winter's grayer hues, be sure to keep your feeders filled and your favorite backyard feathered friends will hang around for a long winter's feast.

—Anne A West

Wild Gifts for the Holiday Season

Suet for the Season
Page 2

Under My Umbrella
Page 3

Fill Your Feeders
Page 3





Did You Know?

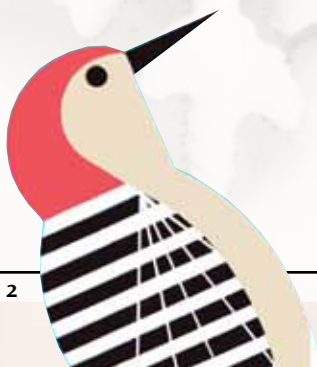
Birds flock because there is safety in numbers, and they have a better chance to avoid predators than a single bird on its own. There are always a few feathered sentries on lookout, ready to sound the alarm if a predator is spotted.

There are approximately 9,300 species of birds on the planet, with an estimated 100 billion to 1 trillion birds in the world.

The average backyard is visited by 15-20 bird species.

Did you know different bird groups are called by specific names?

- Congress of crows
- Covey of quail
- Exaltation of larks
- Gaggle of geese
- Murmuration of starlings
- Muster of peacocks
- Nye of pheasants
- Paddling of ducks
- Parliament of owls
- Sord of mallard
- Stand of flamingos
- Watch of nightingales



SUET for the Season

Suet provides year-round nutritional value, and brings even more visitors to your home. Easy to use, suet is an excellent, compact solution to add to any feeding station during any season, especially where space may be limited.

Looking for a great gift for the new backyard birding fan? Suet and a suet feeder is the perfect "starter kit" for anyone looking to begin their backyard feeding station.

Wild Bird Centers suet comes in seven different flavors, each providing nutrition to your backyard birds during the cold winter months, as well as enjoyment watching your feathered friends gather for a nourishing winter feast.



Wild Gift: Suet Feeders

With several styles to choose from, WBC's suet feeders are the perfect match to our suet cakes. Excellent for attracting woodpeckers, nuthatches, titmice, chickadees and other favorite backyard birds. Suet brings excitement to your yard in all seasons.



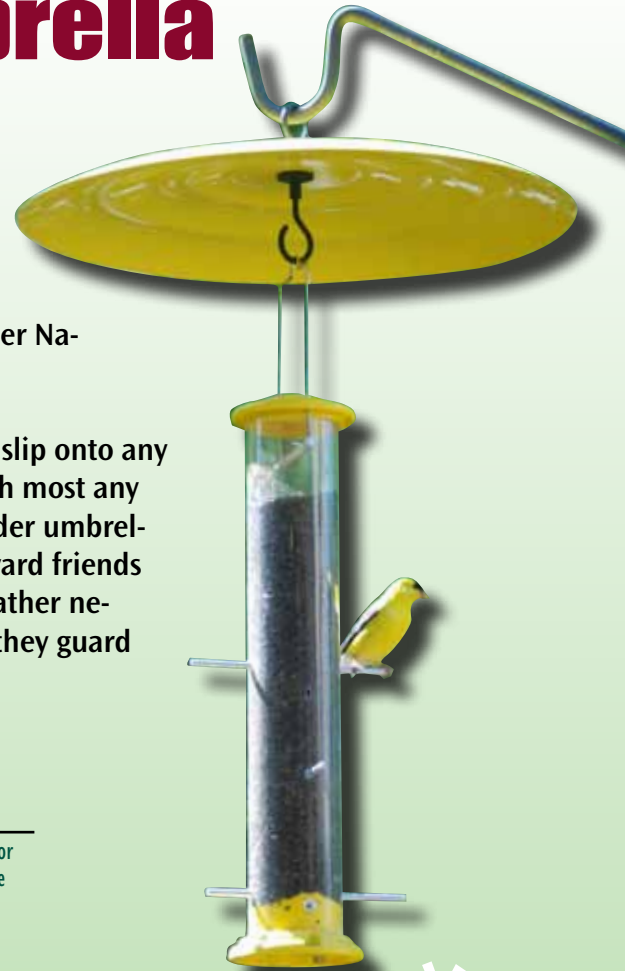
Under My Umbrella



W

hether you live in the snow and ice belt, or just experience milder seasonal weather, rain guards are perfect for guarding against Mother Nature's diverse elements.

A breeze to attach, rain guards easily slip onto any pole attachment and can be used with most any feeder. Bright and colorful, these feeder umbrellas not only allow your favorite backyard friends to stay dry as they dine, but are a weather necessity to keep seed fresh and dry as they guard against the elements.



Wild Gift: Rain Guards

WBC has several rain guards to choose from--just pick a color and size, place on any attachment and slip the feeder on the underneath hook. Your birds will thank you!



Keep Feeders Filled

While many birds migrate to warmer climates during the winter season, there are quite a few that stick around, flying no further away than the next yard. These winter friends rely on established feeding areas, so keeping your feeders filled is a must during the months when food is scarce.

Wild Gift: Quality Bird Seed

Better seed makes for a better backyard bird feeding experience. What a great gift to offer family, friends and neighbors and, of course, your backyard birds. All WBC seed contains only the freshest ingredients blended to attract a wide variety of birds, or target specific birds. See the difference Wild Bird Center seed makes.



The Perfect Pair for the Season!



Wild Gift Combo: Feeder & Seed

Select from a wide variety of feeders: Suet, Tube, Hopper, Ranch. Pair with your choice of Wild Bird Center seed, and you'll have the most unique and most treasured gift to offer any nature lover.



Wild Bird News®

ISSN pending

Corporate Edition is a publication of the
Wild Bird Center of Glen Echo, MD

Wild Bird Centers of America, Inc.®
offers franchise opportunities.
For information, contact:
(877) 945-3247
Jeff Young

e-mail: info@wildbird.com
www.wildbird.com

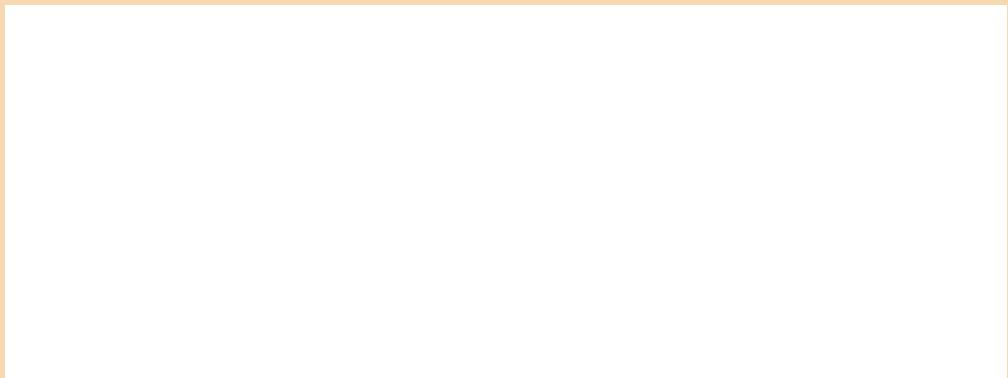
Wild Bird Centers of America, Inc.®
Neil Gladner, Vice President
Retail Operations and Marketing
7370 MacArthur Boulevard
Glen Echo, MD 20812
(301) 229-9585

©2011 All rights reserved.



Wild Bird Center

7370 MacArthur Boulevard, Glen Echo MD, 20812
(301) 229-9585
www.wildbird.com



visit us at www.wildbird.com

Wild Gift Idea: A Warm Bath

A must-have for winter bathing!

A greater number and variety of birds visit birdbaths in winter more often than any other time of the year, and for those who live in the colder climates, adding a heater is an absolute necessity.



Keep snow and ice from closing down your birdbath this winter. The heated birdbath, far right, is an excellent choice to ensure birds will have fresh water to bathe and drink. Makes an excellent gift idea for family, friends and birds!

